

What patients and caregivers do with knowledge of Alzheimer's disease CSF test results: Findings from the IMPACT-AD BC study



www.impactAD.org

Khushbu J. Patel¹, David Yang¹, Howard H. Feldman², Ging-Yuek R. Hsiung^{3,4}, Haakon B. Nygaard^{3,4}, John R. Best⁵, Emily Dwosh⁴, Julie M. Robillard³, Mari L. DeMarco^{1,6} Correspondence: mari.demarco@ubc.ca

1. Dept of Pathology and Laboratory Medicine, University of British Columbia; 2. Dept of Neurosciences, University of California San Diego; 3. Div. of Neurology, University of British Columbia; 4. Clinic for Alzheimer Disease and Related Disorders, University of British Columbia; 5. Centre for Gerontology, Simon Fraser University; 6. Dept of Pathology and Laboratory Medicine, Providence Health Care

Background

Alzheimer's disease (AD) CSF biomarkers (amyloid-beta peptides and tau proteoforms) have demonstrated high diagnostic accuracy; however, little is known about the experiences of patients and their family members with this testing. There is also a gap in knowledge around the impact and utility of testing as part of routine medical care for personal decision-making and long-term planning.

Methods

- 'Investigating the Impact of Alzheimer's Disease Diagnostics in British Columbia' (IMPACT-AD BC) is an observational, longitudinal study examining the impact of AD CSF testing on clinical management, health care utilization, and patients and their care partners (NCT#05002699)
- A subset of participants and their identified 'care partner' were interviewed post-biomarker disclosure (n=34 patients, n=31 care partners)
- Thematic content analysis was performed on interview transcripts

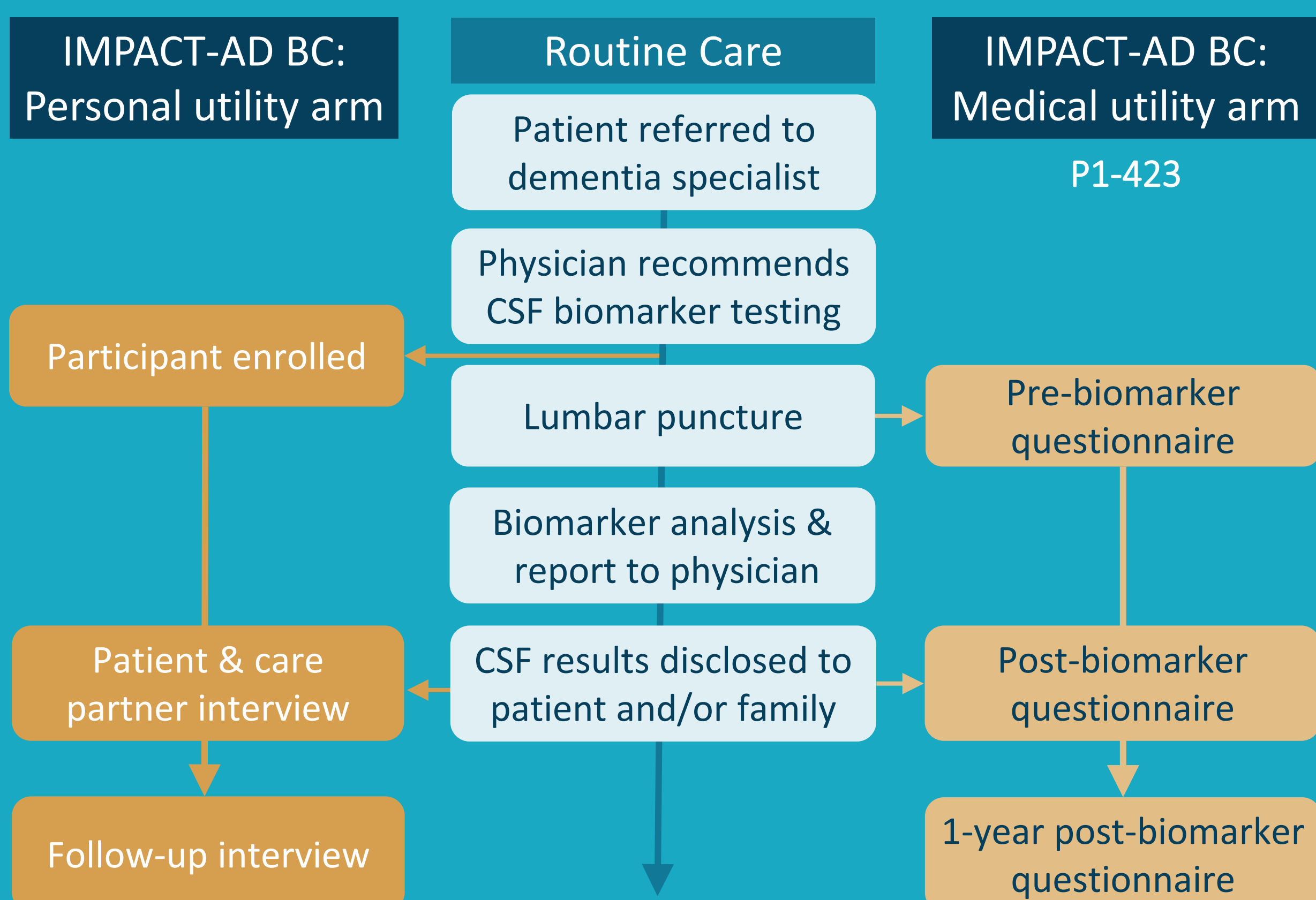


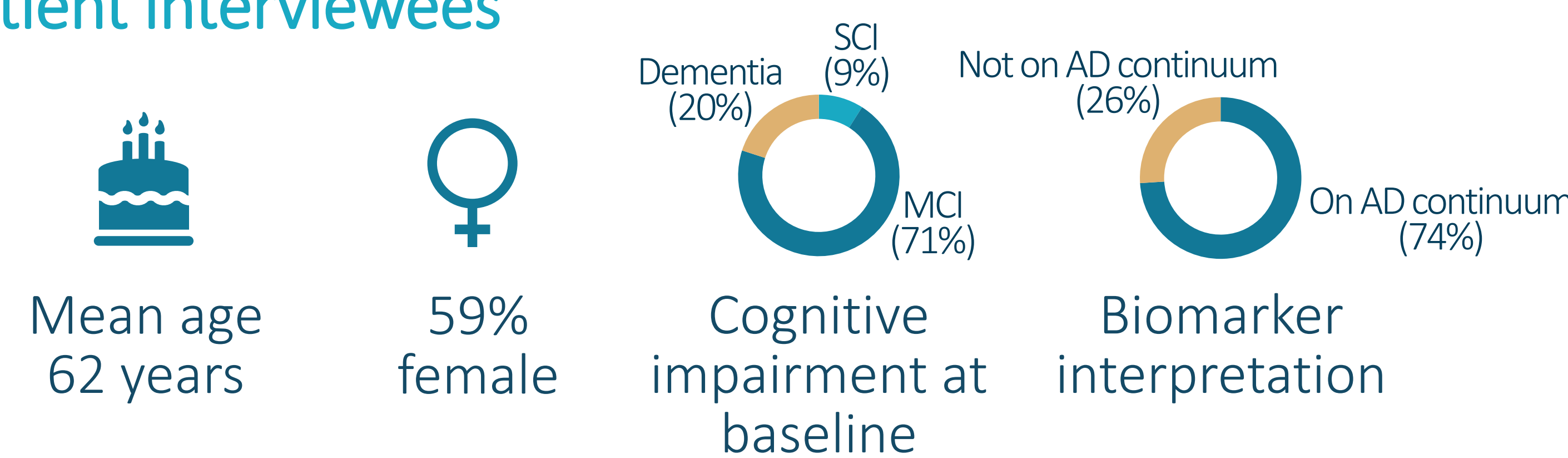
Figure 1. IMPACT-AD BC study flowchart

Conclusions

- For patients meeting the 'appropriate use criteria' for Alzheimer's disease biomarker testing, diagnostic clarity was the major motivator in their decision to undergo testing
- Diagnostic certainty was the primary reason patients and care partners reported overall positive feelings associated with learning biomarker results
- Patients and care partners used biomarker results to their benefit in making positive lifestyle changes and planning for their futures
- Findings from the IMPACT-AD BC study reveal new opportunities to better support individuals living with dementia

Results

Patient interviewees



Decision to undergo biomarker testing

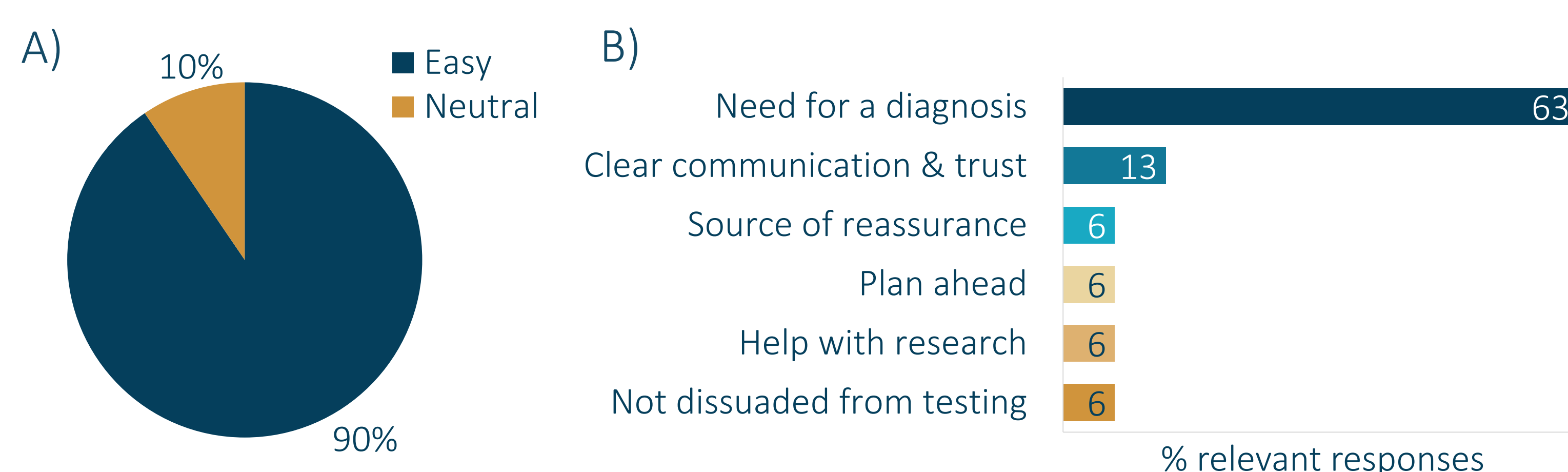


Figure 2. (A) Patients' rating for ease/difficulty of making the decision to undergo testing. (B) Primary reason for 'ease' of decision.

Feelings post-biomarker result disclosure

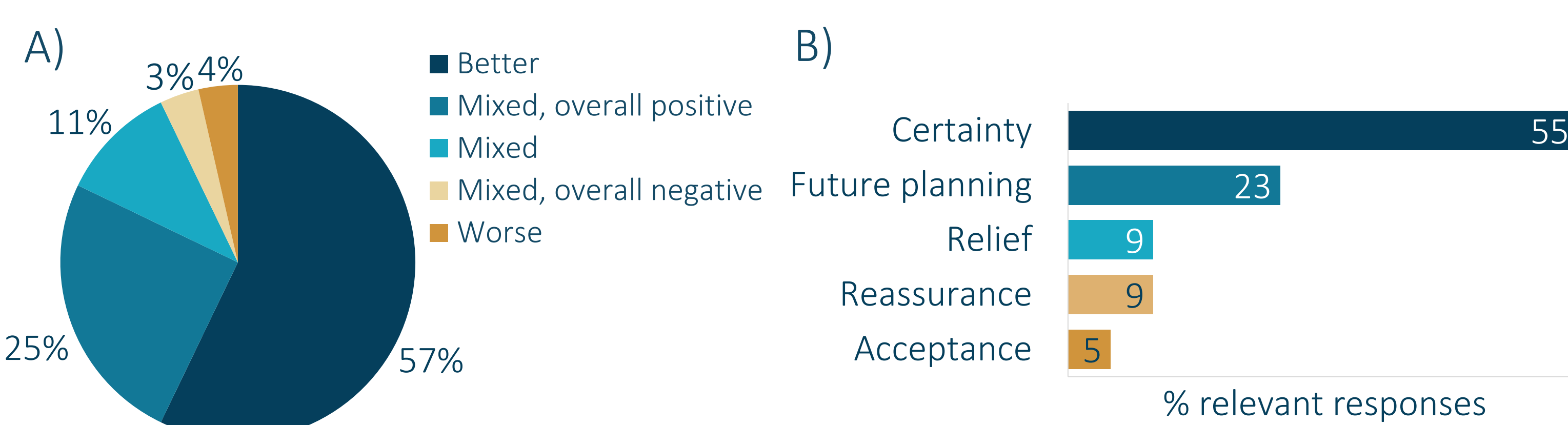


Figure 3. (A) Patients' feelings post-biomarker disclosure. (B) Primary reasons for overall positive feelings post-disclosure.

Impacts on decision-making and planning as a result of biomarker testing

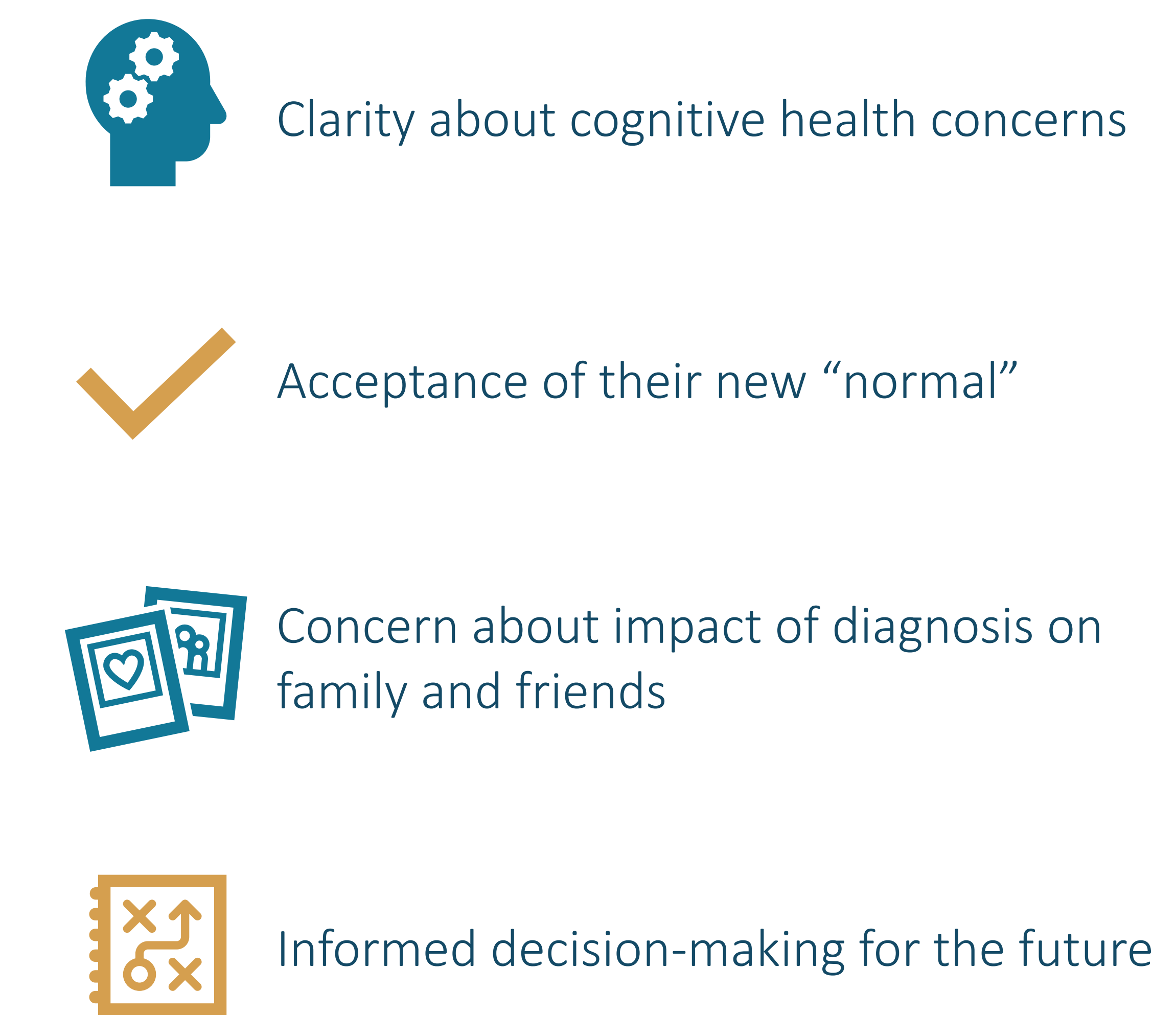
Wellness and lifestyle changes



Planning for the future



Major themes from patient responses



Themes from care partner responses

